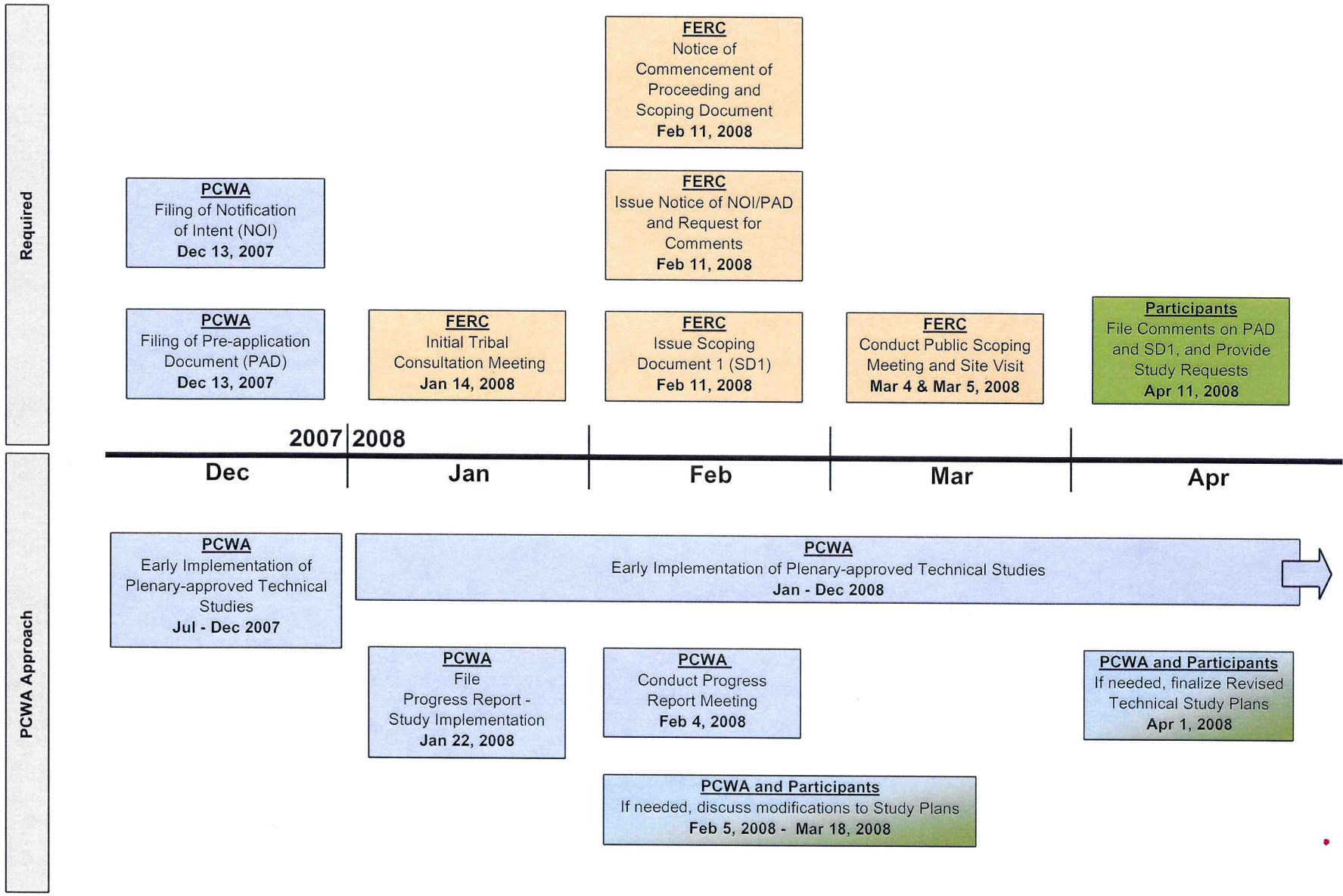
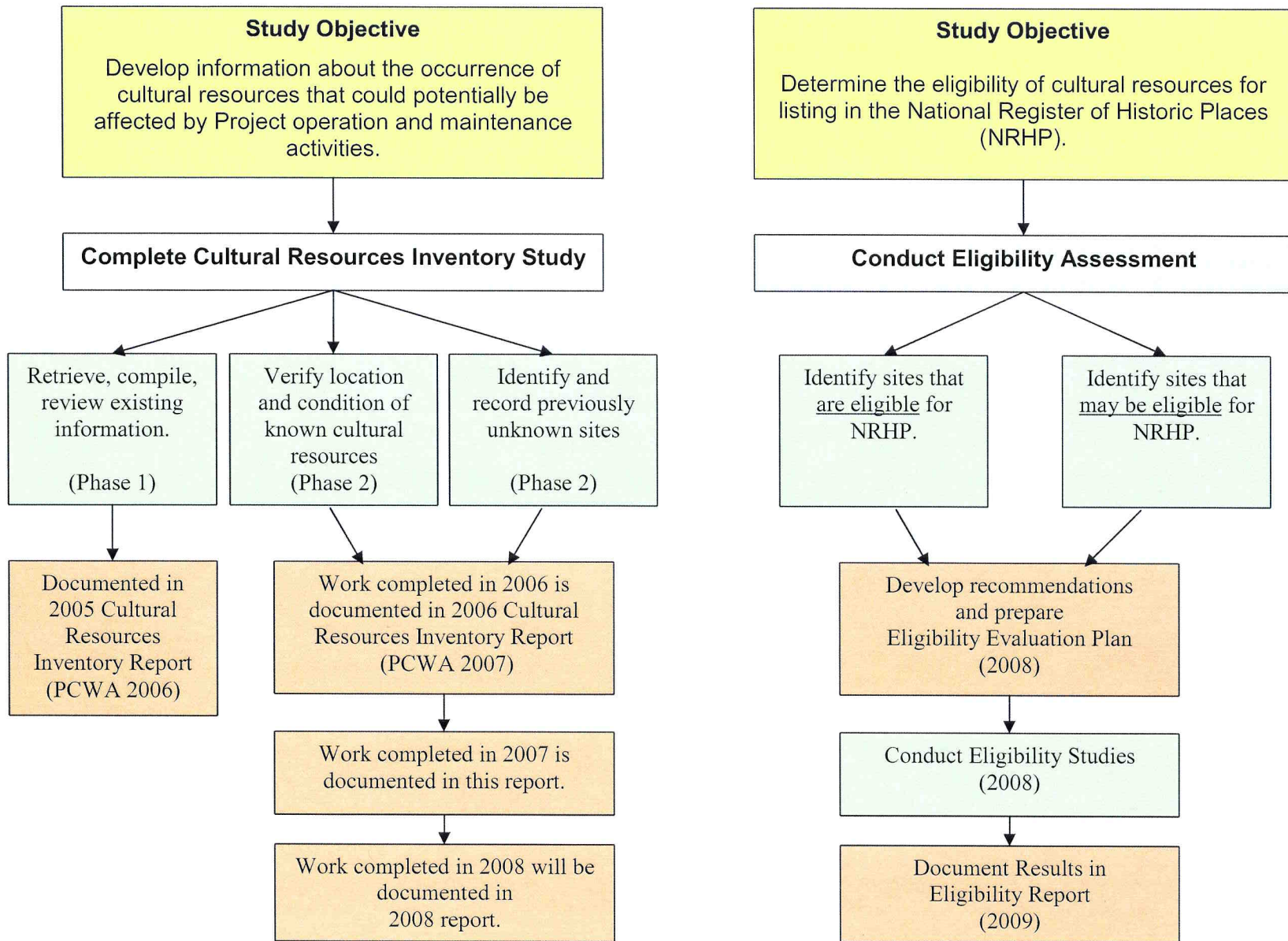


**Placer County Water Agency
Middle Fork American River Project
NOI/PAD Filing Process and Associated Deadlines
(Distributed September 4, 2007)**



Note: Dates are only approximate at this time and are dependent on the actual filing date of the PAD. Revisions to this timeline will be posted on the PCWA website, <http://relicensing.pcwa.net/>.

Figure 1: CUL 1 – Cultural Resources Study Objectives and Related Study Elements and Reports.



CUL1 – Cultural Resources Technical Study Plan

Schedule:

Date	Activity
Complete Cultural Resources Inventory Study	
March through July 2007	Amend Archaeological Investigation (AI) permit and complete inventory field work
August through October 2007	Analyze data and prepare draft Inventory Report
November 2007	Distribute draft report to the USDA-FS, tribes, and TWG participants
November 2007 through January 2008	USDA-FS, tribes and TWG participants review and provide comments on draft report
February and March 2008	Resolve comments and prepare final report
March 2008	Distribute final Inventory Report
Assess Eligibility	
November and December 2007	Determine whether there are any sites that may be eligible for inclusion on the NRHP or eligible for evaluation under Section 106 of the NHPA. Develop recommendation re: need for evaluation studies.
January and February 2008	Consult with USFS and Tribes re: recommendations
March 2008	Prepare draft Eligibility Evaluation Plan
April 2008	Distribute draft Eligibility Evaluation Plan to USDA-FS, Tribes and TWG participants for review
April and May 2008	USDA-FS, and tribes review and provide comments on draft Eligibility Evaluation Plan
June and July 2008	Resolve comments and prepare final Eligibility Evaluation Plan
July 2008	Distribute Final Eligibility Evaluation Plan
Contingency Study – Conduct Evaluation Study	
June through July 2008	Amend Archaeological Investigation (AI) permit to cover Evaluation Studies
August 2008 through July 2009	Conduct evaluation studies, data analysis and report production.

LEVEL OF EFFORT AND COST:

To be determined.

REFERENCES:

Placer County Water Agency (PCWA). 2005-2006 Cultural Resources Inventory Study Plan. May 27, 2005.

PCWA. Final 2005 Cultural Resources Inventory Study Report. August 23, 2006.

PCWA. Draft 2006 Cultural Resources Inventory Study Report. April, 2007.